



*jordanfishwick*

Weston Road

£8,500 PCM





# Weston Road, Wilmslow, SK9 2AN £8,500 PCM



## The Property

AVAILABLE EARLY JANUARY

An impressive family residence on one of Wilmslow's most prestigious roads, measuring just shy of 7000sqft. The house is set in expansive, mature gardens and is within walking distance of Wilmslow town centre. Located on a private no-through-road and accessed via a gated driveway with ample space for parking, this seven bedroom substantial home offers fantastic living space over three floors and is in a great condition throughout. Filled with period features, the property is entered on the Ground Floor via a grand marble tiled entrance hall with a large oak staircase leading to a galleried landing above. The hall leads on to four spacious reception rooms with solid wooden floors and access to the garden, as well as a bespoke kitchen with inbuilt appliances, a generous dining area and attached utility room. Through the kitchen, the gym, converted cinema/media room and second kitchen can be accessed. The First Floor comprises of a large master suite with a bespoke dressing room and newly fitted en-suite, five further spacious double bedrooms, one en-suite and two further family bathrooms, as well as an additional laundry room. There is an abundance of storage throughout, with most of the rooms having inbuilt storage. The Second Floor provides a generous suite, with an open plan en-suite and stunning views of the gardens below. The expansive gardens wrap around the entirety of the property with mature landscaping and perimeter trees providing excellent privacy screening.

## Directions

SK9 2AN





- SEVEN DOUBLE BEDROOMS
- GATED WITH AMPLE PARKING AND LARGE GARDENS
- WALKING DISTANCE OF WILMSLOW TOWN CENTRE
- FOUR RECEPTION ROOMS
- COUNCIL TAX G
- EPC D

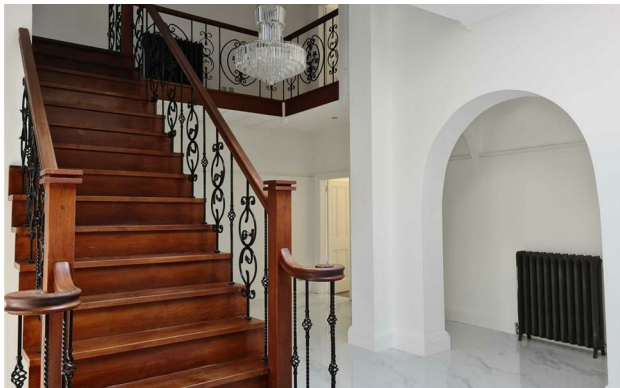
Postcode - SK9 2AN

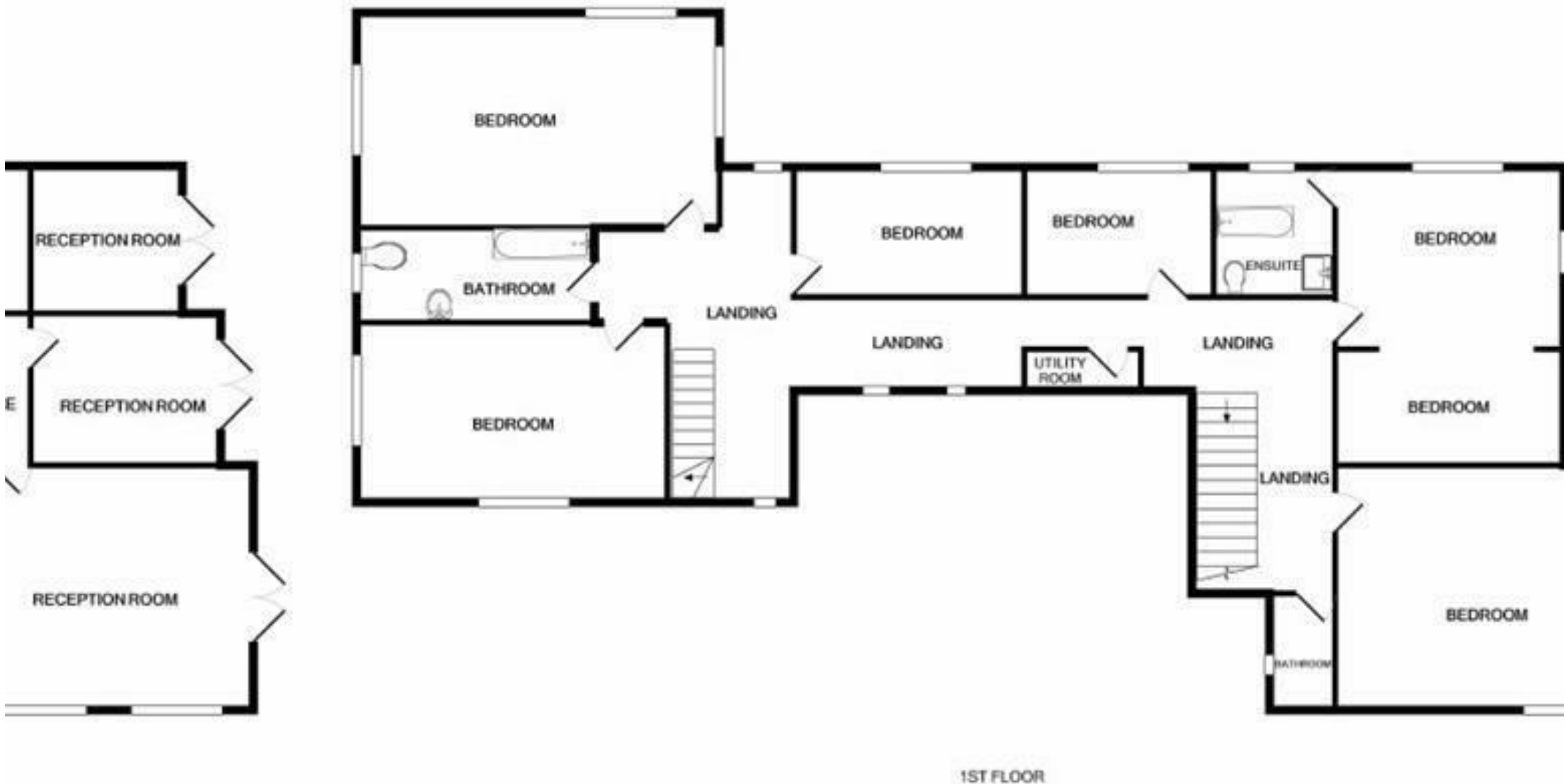
EPC Rating - D

Floor Area - sq ft

Local Authority - Cheshire East

Council Tax - G





Measurements are approx  
Mab



These particulars are believed to be accurate but they are not guaranteed and do not form a contract. Neither Jordan Fishwick nor the vendor or lessor accept any responsibility in respect of these particulars, which are not intended to be statements or representations of fact and any intending purchaser or lessee must satisfy himself by inspection or otherwise as to the correctness of each of the statements contained in these particulars. Any floorplans on this brochure are for illustrative purposes only and are not necessarily to scale.

Offices at: Chorlton, Didsbury, Disley, Hale, Glossop, Macclesfield, Manchester Deansgate, Manchester Whitworth Street, New Mills, Sale, Wilmslow and Withington

01625 536300